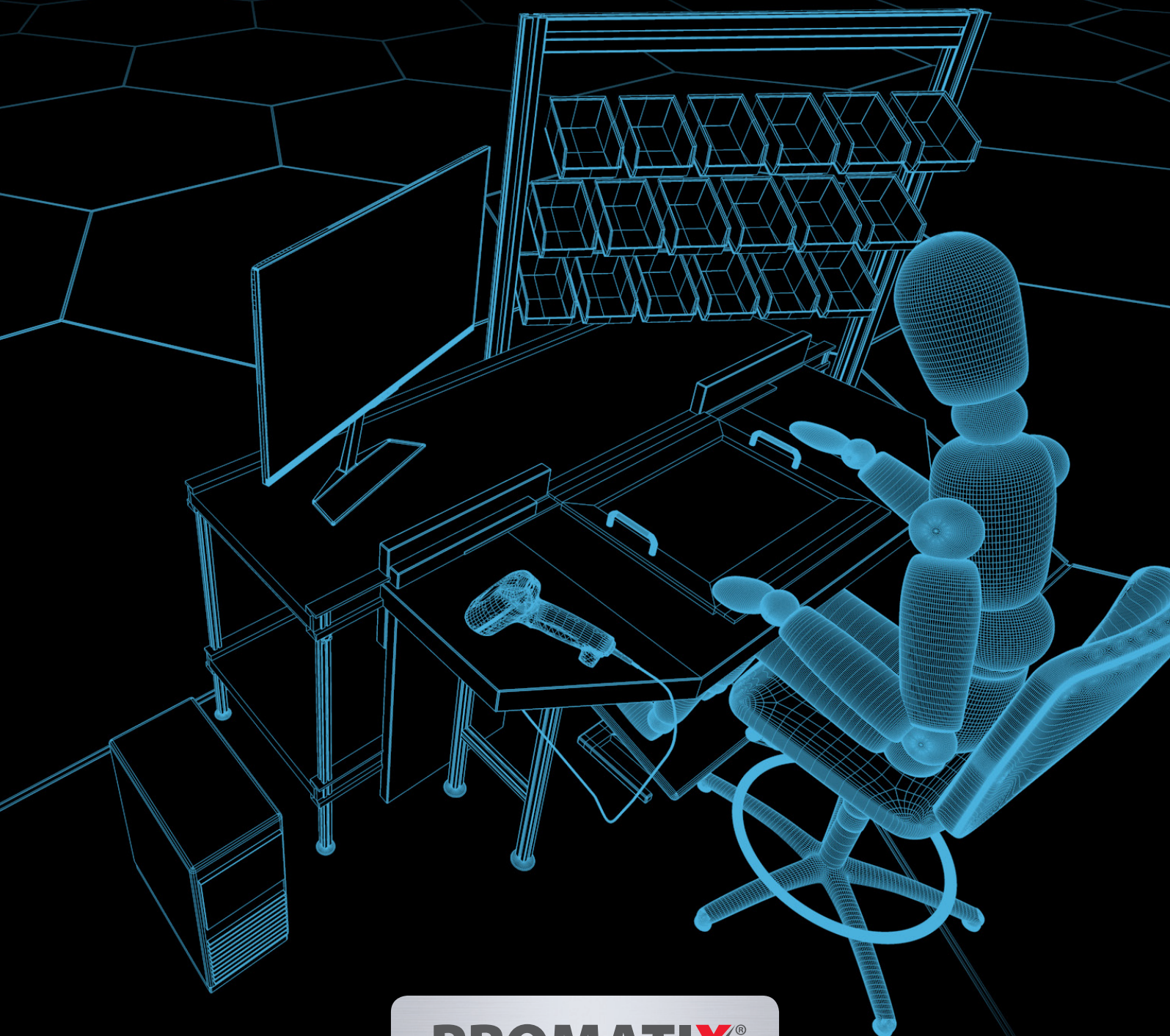




MANUAL WORK STATIONS





THE PRO X S SMART FACTORY APPLICATION FOR MANUAL WORK STATIONS

In a production company with discrete part production, there are a large number of production processes in place. These production processes include assembly activities, manual testing activities, individual automated units and fully automated production lines.

With its solutions, Promatix covers this broad spectrum of applications completely.

PRO X S SMART FACTORY captures relevant data directly at the manual work station and transfers it to the database. This makes operating data as well as production step data available for visualisation and analysis.

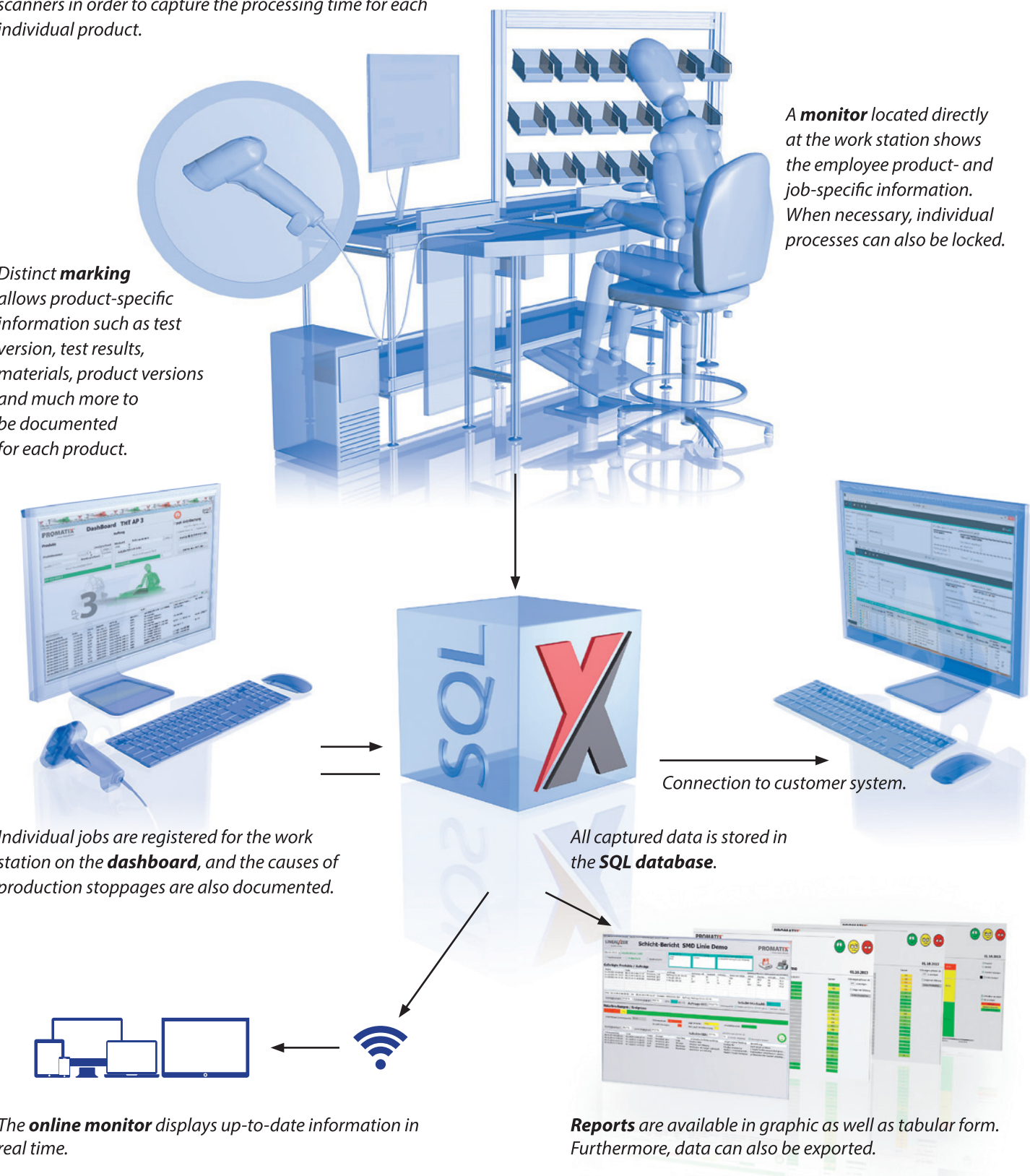
PRO X S SMART FACTORY supports employees with information such as assembly instructions, test instructions and drawings.

PRO X S SMART FACTORY creates transparency. It indicates at all times which job is currently in which workstep. It also shows the current state of progress of the job.

The **manual work station** is equipped with sensors and/or scanners in order to capture the processing time for each individual product.

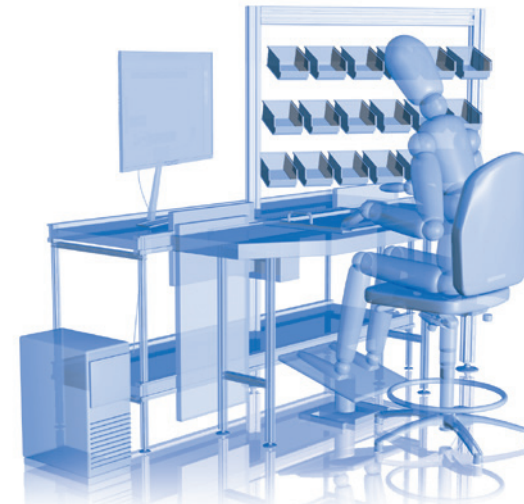
Distinct **marking** allows product-specific information such as test version, test results, materials, product versions and much more to be documented for each product.

A **monitor** located directly at the work station shows the employee product- and job-specific information. When necessary, individual processes can also be locked.



RFID tags, barcodes, 2D codes as well as QR codes can be used for clear product **identification**.

TRANSPARENCY CREATES KNOWLEDGE CREATES SUCCESS



Workstep 1
MOUNTING

Workstep 2
WELDING

Workstep 3
ASSEMBLY

Workstep 4
FUNCTIONAL TEST

WSX

MATERIAL

DELIVERY

DELIVERY

DELIVERY

MATERIAL
RECEIPTMATERIAL
RECEIPTMATERIAL
RECEIPTMATERIAL
RECEIPT

Support:

The sequence of the individual worksteps can be locked if required.
"Hold times" can also be specified.

Transparency:

The cockpit displays current information for all to see - ensuring transparency and motivation.
Recurring incidents are systematically recorded and evaluated, resulting in structured improvement processes with the required sustainability.

Traceability:

The integrated traceability function documents and monitors the path of a product through different stages of production and worksteps.

THE **PROMATIX**® METHOD:

1. Machine and operating data capture

Objective and constant monitoring of production equipment.

2. Visualisation

of captured data in real time on the online monitor in the cockpit display.
This creates transparency on the shop floor.

3. Support for employees

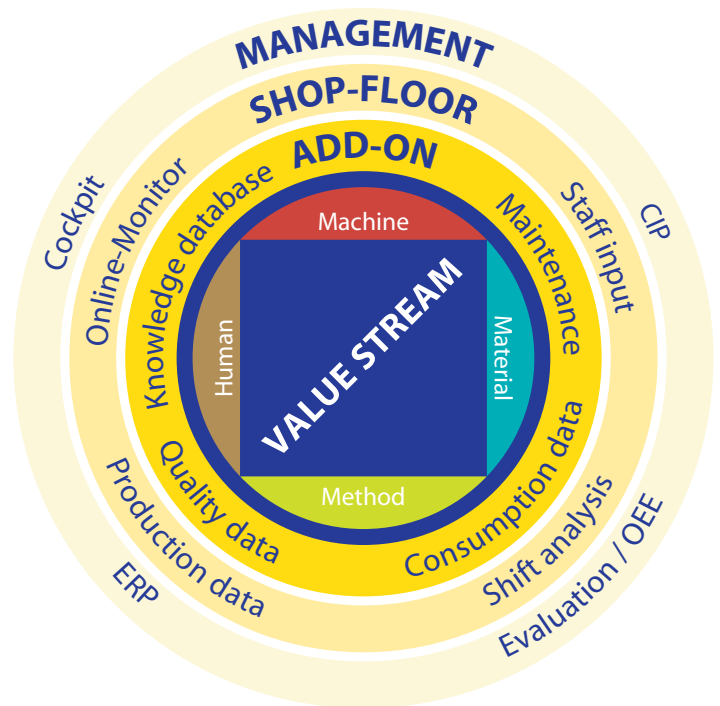
through the provision of information.

4. Evaluation of data

Key production performance indicators are determined, and optimisation potential identified.

5. Realisation of optimisation potential

Step by step towards the optimum.



Risk-free test installation

We will be happy to set up a low-cost, non-binding and therefore risk-free test installation in your company, enabling you to convince yourself of the benefits of our system.

Ask for a personal consultation

If we have aroused your interest and you would like more information, simply contact our team of experts on

+49 (0) 7392 - 709 16 38

- they will be happy to answer your questions.

We can also arrange a meeting in which we will be glad to introduce our system to you personally and in detail.

PROMATIX GmbH

Uhlmannstrasse 45 · 88471 Laupheim, Germany

Phone: +49 (0) 7392 - 709 16 38 · Fax: +49 (0) 7392 - 709 16 47

Email: info@promatix.de · www.promatix.de